

Talent Yield Coalition Inc

Presents

The Alpha Omega System

May 14, 2010

Talent Yield Coalition Inc

Organized in the spring of 1990, as a 501© 3, with programs designed to help youth 13 through 21.

Our **objectives** were to provide structured programs and resources to children normally involved in street activities. The coalition started with over 100 participants from low income homes across Houston and Harris County and now regularly serve over 150 young persons with over 400 in attendance on special occasions

TYC. Inc. conducts special projects to include interaction with:

Houston Parks and Recreation Department

City of Houston Housing Authority

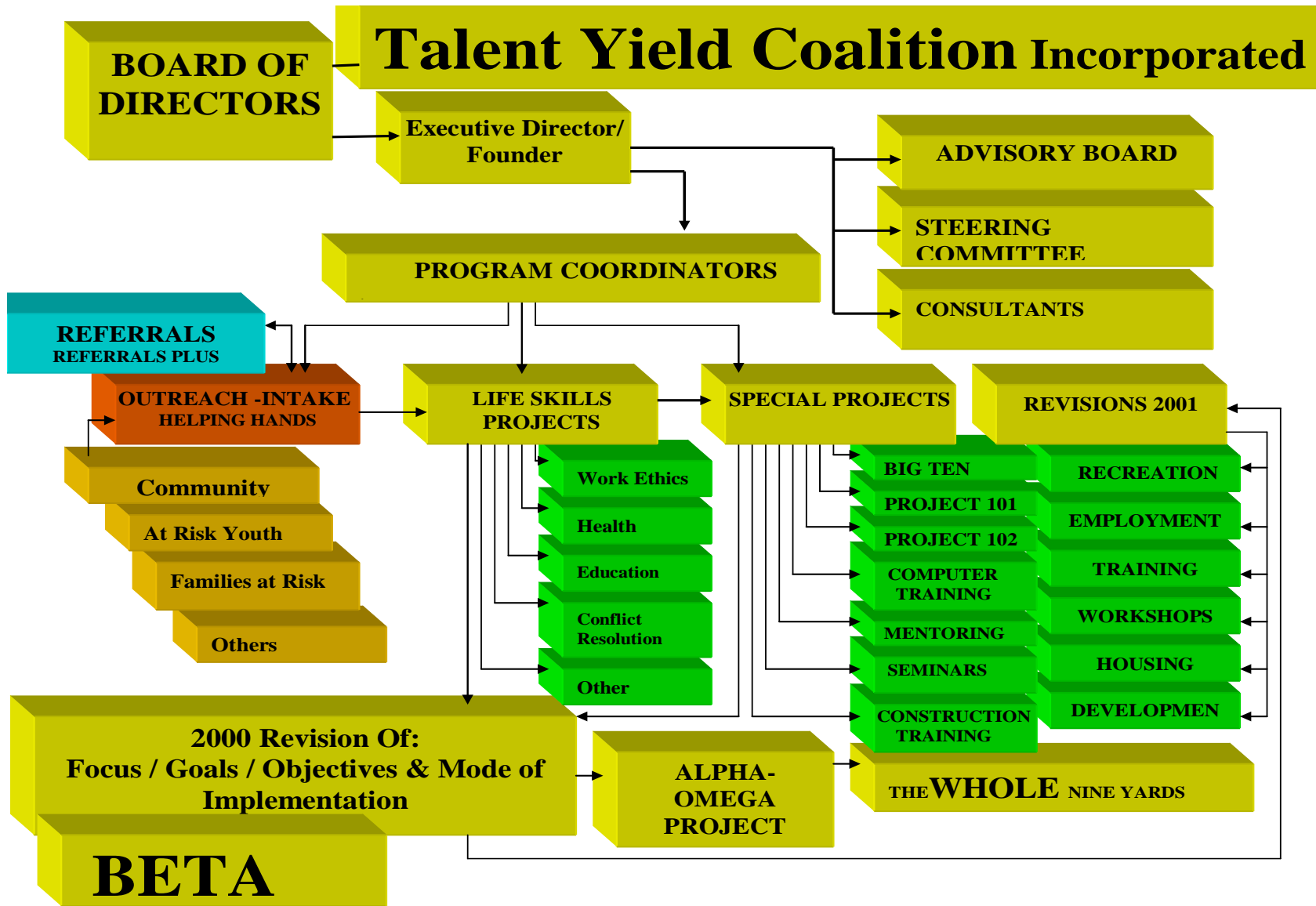
Several H.I.S.D. schools

Churches and numerous "grassroots" agencies.

Projects range from tutorial, drug and alcohol prevention, medical awareness, entrepreneurial development, problem solving, citizenship and cultural awareness, and mentorship to recreation.

TYC. Inc -generates revenue through RFP's, Employment, Private Donors, Grants, Foundations, Assisted Living and Construction Contracts to continue its mission and objectives as a non-profit organization

Original Organizational Chart Talent Yield Coalition Inc.



The emphasis on filling the void between existing social service agencies and a targeted client (*youth on the streets*) and advocating the tearing down of walls and working collectively, thus maximizing resources, expertise and client served we find that programs based on the premise that getting into the streets, delivering the message and providing resources as well as referrals are the most effective. These types of activities might well serve as our last alternative in attempts to "saving our youth".

Resulting from our efforts to date, successes achieved and evaluation of the activities and projects instrumental in its implementation, our Board of Directors, Advisory Board and staff have developed **“The Alpha Omega System”** for which encompasses the lessons learned with youth to an effort to address ills of all disenfranchised citizens.

Alpha Omega System

What is its Purpose?

The emphasis on filling the void between existing social service agencies for a targeted client (*disenfranchised citizens*) and advocating the tearing down of walls to working collectively, thus maximizing resources, expertise and client served, we find that programs based on the premise that facilitating 'all' of the social needs for that client, while providing resources as well as referrals are the most effective.

That means working with existing communities, i.e.. Churches, government agencies, and non profits to offer basic needs such as shelter, training for life skills, education, and employment for economic wealth to those affected by social needs such as crime, drugs, poverty, hunger, illiteracy, homelessness, pregnancy, unemployment, and health issues with the intent of a revitalized community.

Our Target Group

- ◆ Workforce or Working Class
- ◆ Youth
- ◆ Welfare
- ◆ Elderly
- ◆ Ex-Felons
- ◆ Homeless

Alpha Omega System

What are the Benefits?

Church-

- An adhesive operational system to increase church membership as well as tithing
- Another method of marketing the Church
- More effective system of benevolence
- A manageable operational system to deliver to parishioners
- Maximization of the Church's facilities by providing an intake process and life skill workshops
- Provides continuity of the System by training key Church personnel to operate the various programs

Government Agencies-

- Provides a more structured program to be delivered addressing many of the government RFPs (request for proposals)
- Provide additional resources for existing agencies ie shelter, training, employment, life skills, etc

TYC. Inc provides a networking conduit between all service agencies thus eliminating duplication, maximizing the use of government funds and collaborating of manpower.

Alpha Omega System

How is it Implemented?

Alpha Omega System is a methodical and collaborative approach to delivering the answers of the social needs directly targeted at a population in need.

The components of the program are:

Beta- TYC, Talent Yield Coalition, Inc. as owner of the Alpha Omega System

Gamma- Administrative Group that acts as a management company with an implementation consulting team

Alpha- Assessment, Evaluation and Case Management using intake process

Delta A- Placement and Referral to partners, affiliates, contractors, vendors, etc

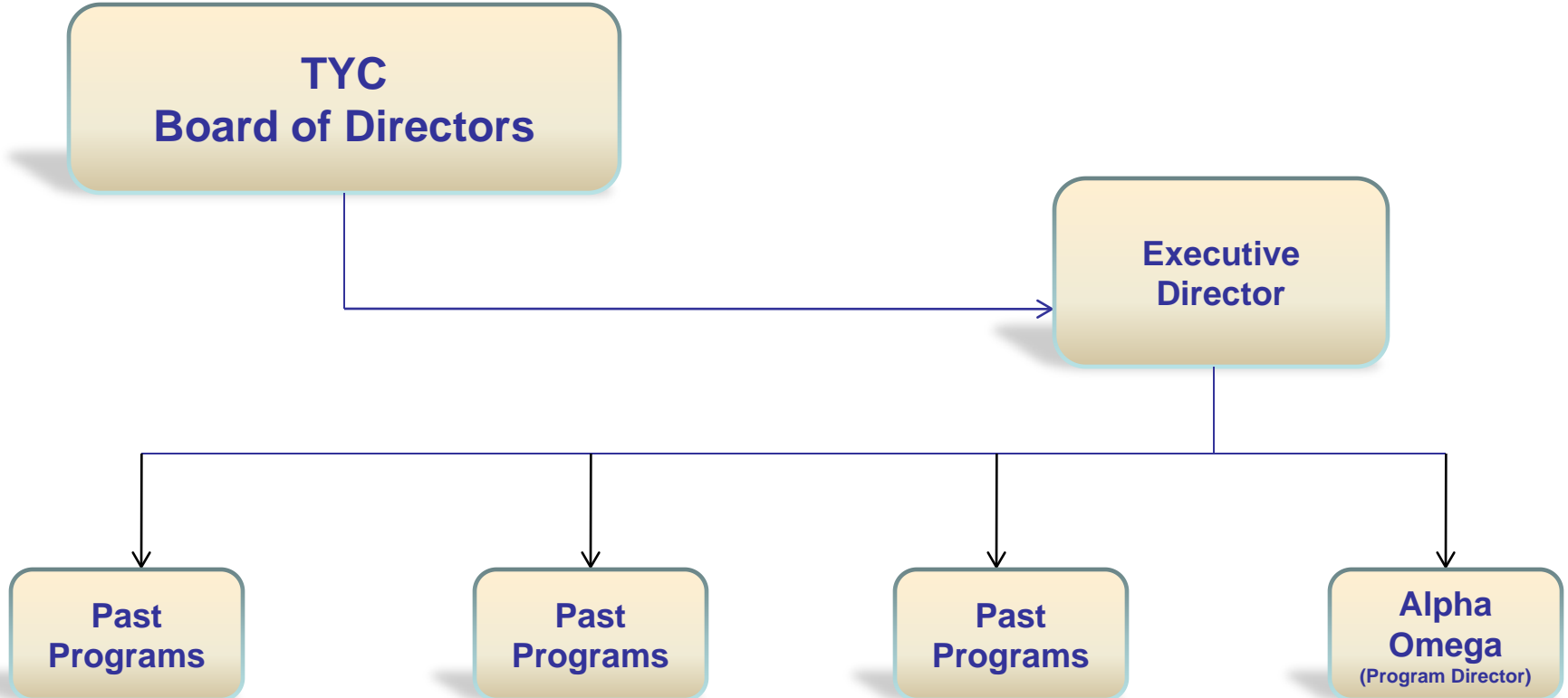
Delta B- Core Needs to be delivered in a structure environment

Omega- Success Stage as a measurement

Alpha Omega System

Beta

TYC (*Talent Yield Coalition*) is a (501)c(3) non-profit organization which is controlled by the Board of Directors with an Executive Director. Its function is to identify, implement and monitor programs such as the **Alpha Omega System** that will benefit the social needs of a disadvantaged population.



Alpha Omega System

Gamma

→ A management group also known as “**AG**” (*Administration Group*) supervises and manages the Alpha Omega System.

Responsibilities of the Management Group-AG

Marketing – Business/ Development and Fundraising

Legal – Liability protection of the non-profit and the Church re-invests into its surrounding community

Financial – Accounting and Finance reporting for the Board/ corporate, government and non-profit entities

Human Resources – Staffing and HR compliance

Political – Government Liaison/ Lobbyist

Compliance and Quality Assurance – Monitors, assess, and reports the findings of various programs within Alpha Omega System

Operations – Administrative, secretarial support, and facility maintenance

Project Management - Development, implementation, management, and reporting of projects.

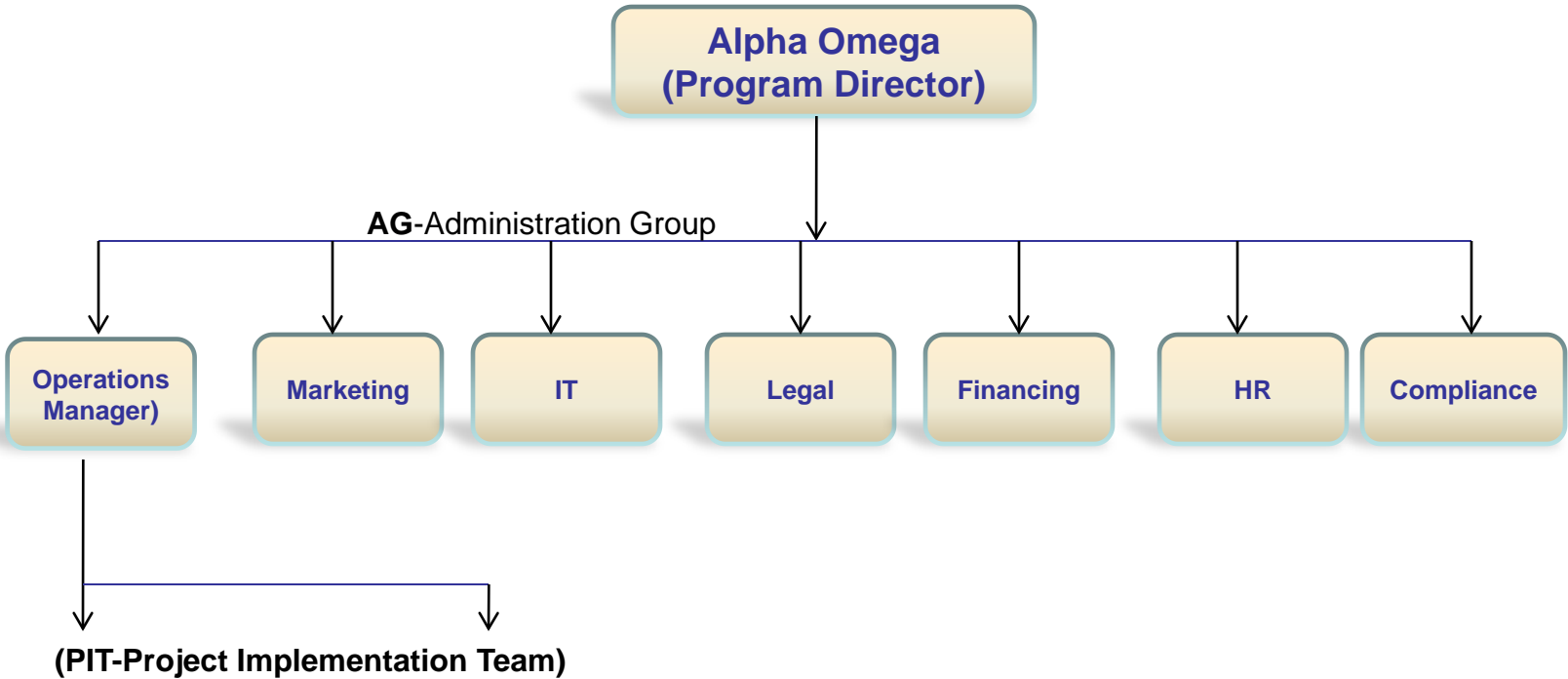
Technology Group (IT) - Develops software, maintains hardware, builds databases, maintains network system, and provides technology support throughout the system

Alpha Omega System

Gamma



A management group also known as “**AG**” (*Administration Group*) supervises and manages the Alpha Omega System.



Alpha Omega System

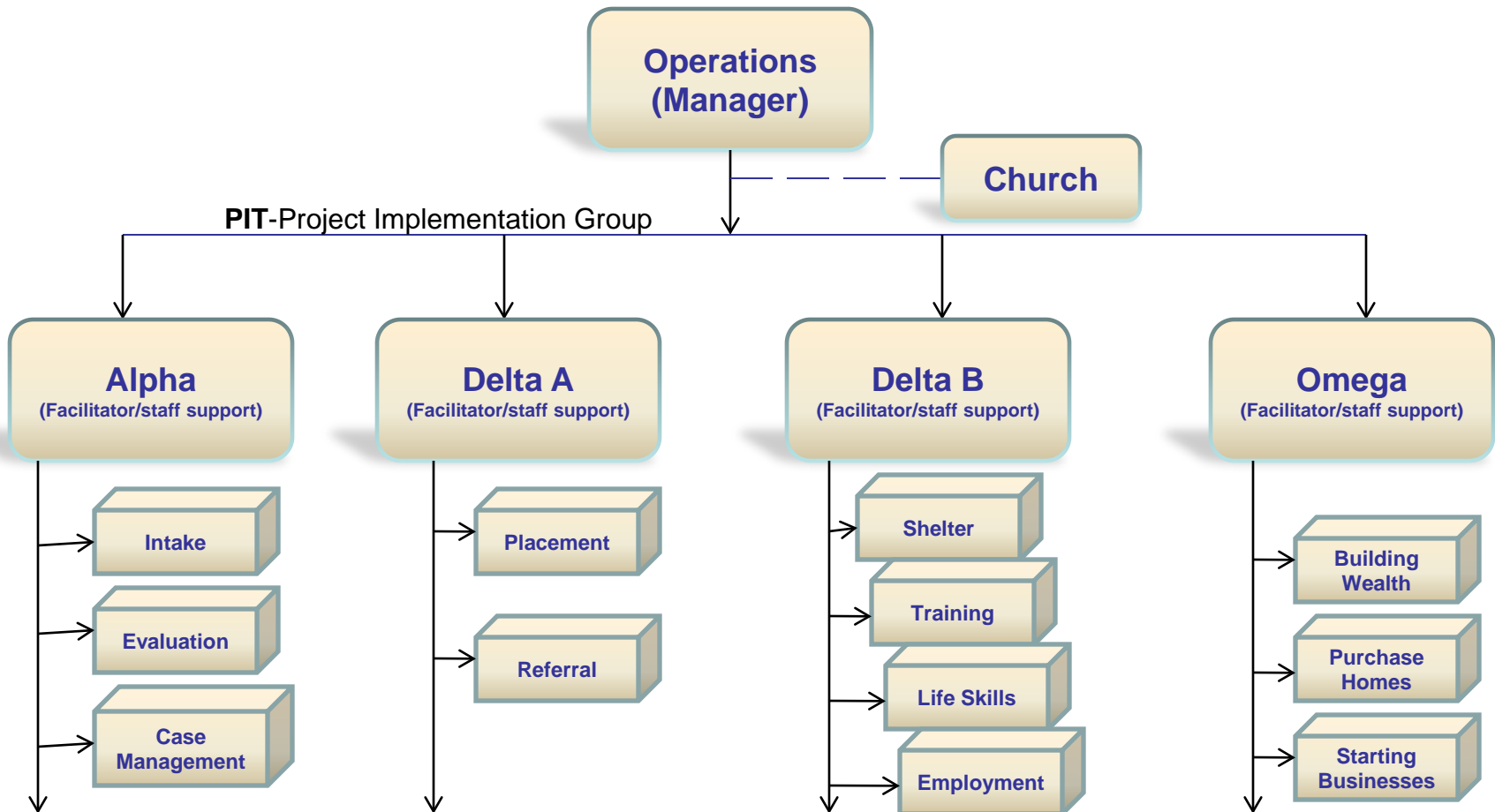
A consulting group also known as “**PIT**” (*Project Implementation Team*) Implements, supervises and manages the processes of the Alpha Omega System. “**PIT**” , the Church along with affiliates and partners become the “**Collaborative Team**”

Responsibilities of the Consulting Group-PIT

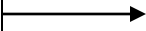
- ☑ Coordinate with the Church, affiliates and partners to implement Alpha Omega
- ☑ Manage each phase of the system for the client to ensure success
- ☑ Become a point of contact for the client regarding the need for resolution
- ☑ Train the appointed Church team member to facilitate the program as a continuation

Alpha Omega System

A consulting group also known as “**PIT**” (*Project Implementation Team*) Implements, supervises and manages the processes of the Alpha Omega System. “**PIT**”, the Church along with affiliates and partners become the “**Collaborative Team**”



Alpha



**Intake Process for Assessment,
Evaluation & Case Management**
(2 Step Process)

Assessment Process includes
collecting demographics in the following
areas

Evaluation Process includes
testing for competency in the areas of

Career Skills

Work Experience

Degrees

Housing

Medical

Certifications

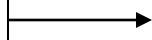
Life Skills

Income Status

Entrepreneur Abilities

NOTE: This data shall be entered into an internal database to track the progress, needs, and success rates. Required Staffing (10:1 clients to facilitator). Initially there will be a 50 client maximum capacity.

Delta A



Placement and Referral to:

- △ Existing Health Facilities
- △ Social Services & Government Agencies
- △ Employment Affiliates or Contractors
- △ Education – GED | HS | College | Special Training

Responsibilities of Delta A

- ❖ Establish a Staff required to research affiliates or partners that will be used in the AOS beneficial to the needs of current and future clients.

- ❖ Monitor, Assess and Manage
 - A. “Affiliates/Partners” that meet the needs of current and future clients of AOS
 - B. “Clients’ Needs Report”, that provides comprehensive information for the client based on the data submitted in the Intake process
 - C. Delta A and the contractor in regards to client status

- ❖ Act as a conduit in the phase of the placement process which this may cycle between Delta A & Delta B for the client

Delta B

→ **Core needs for the targeted group and the delivery of services**

Core Needs

Shelter

Life Skills

Training

Employment

Partners/Affiliates

The Marcelous-Williams Home

Harrland Consulting Company

Next Level Management

Willco Construction Company

Shelter

▶ Temporary

- Home Care Centers
- Temporary Shelters
- Career & Recovery
- Others

▶ In House

- **The Marcelous-Williams Home** provides support and housing.

Delta B

Life Skills – Workshops/Seminars will be jointly delivered by the Church and Alpha Omega.

- Work Ethics
- Conflict Resolution
- Hygiene
- Basic Educational Tool i.e..... Math | English | Reading
- Family Law & Other Issues i.e..... Law | Ethics
- Spirituality i.e..... Religion | Morality | Ethics

We will be able to measure success after Delta B by recycling the client back to Delta A for tracking and monitoring.

Training – Working with partners/affiliates to offer options as well as some in-house training sessions which will be hosted by Alpha Omega directly to the clients. This training will focus on building economic wealth for the client.

The initial basic training offered directly to the clients will include :

- Construction
- Computer
- Business
- Basic Education
- Finance Management
Credit | Banking | Savings | Investment

Delta B

Employment

-Working with clients both skilled and unskilled persons to offer options especially OJT-on the job training.

*In these areas
Entrepreneurship will be
developed*

- Grocery & Retail
- Communications & Computers
- Health Facilities & Services
- Transportation
- Dealerships | Mech. Shops | Bus services
- Day Care | Elderly | Homeless Centers

*In these areas the company
will be trained & assisted in
preparing RFP's and Contracts*

- ◆ Construction
- ◆ Manufacture
- ◆ Home Care
- ◆ Secretarial
- ◆ Day Care
- ◆ Other

Omega

→ Successful Stage for Client



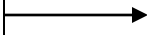
- Client is recycled into Delta A to track and monitor overall success of the program

- Client is required to implement learning's by participating in the Investment Program of Alpha Omega System

INVESTMENTS include but are not limited to:

- Banking – IRA | Savings | etc.
- Property – Home Buying
 - Stocks and Bonds

Sigma



External Monitoring Group (EMG)

A support staff of the entire Alpha Omega System to ensure compliance and reporting to governmental agencies for each phase of AOS to ensure no violation of regulations.

Government

Veterans Administration
Prison System

Private

Existing
Developing

Client Served Assigned Team

Church
Non Profit
Etc.